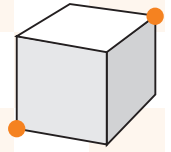


## The Magic Secret

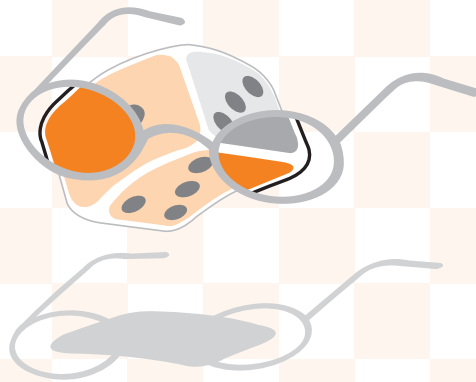


- 2 a. Find a vertex such that the sum of numbers around it is 6.  
What is the sum of numbers around the opposite vertex? \_\_\_\_\_
- b. Find a vertex such that the sum of numbers around it is 9.  
What is the sum of the numbers around the opposite vertex? \_\_\_\_\_
- c. Pick out another corner and write the sum of the numbers around it. \_\_\_\_\_  
What is the sum of numbers around the opposite vertex? \_\_\_\_\_
- d. Look at all the sums you have found. What do sums around opposite vertices have in common? \_\_\_\_\_

Explain: \_\_\_\_\_

\_\_\_\_\_

\_\_\_\_\_

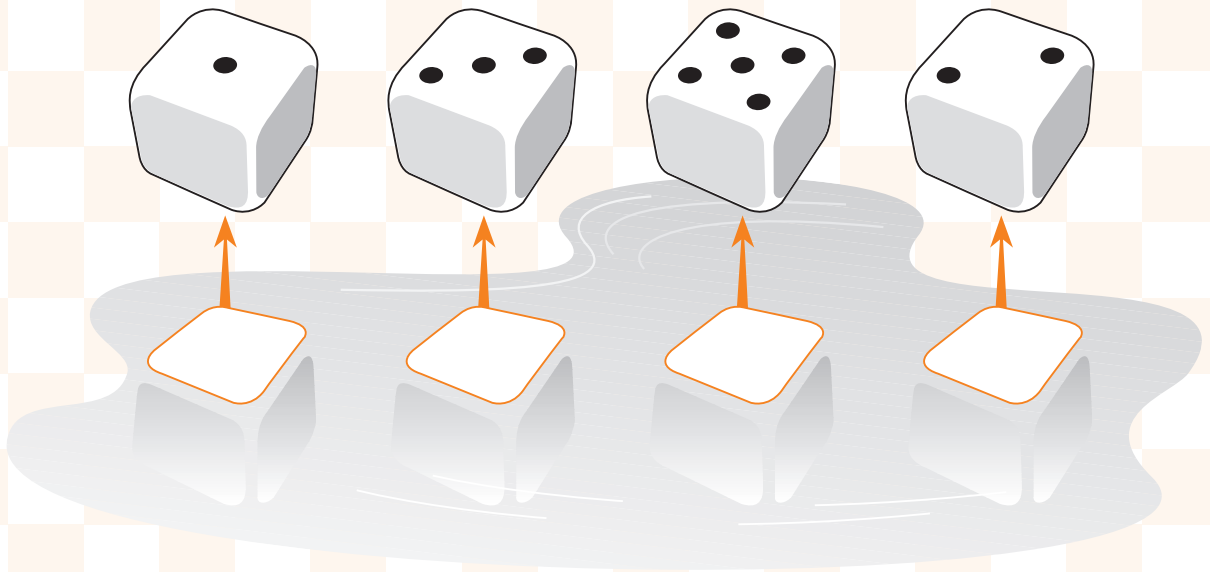


# The Magic Secret



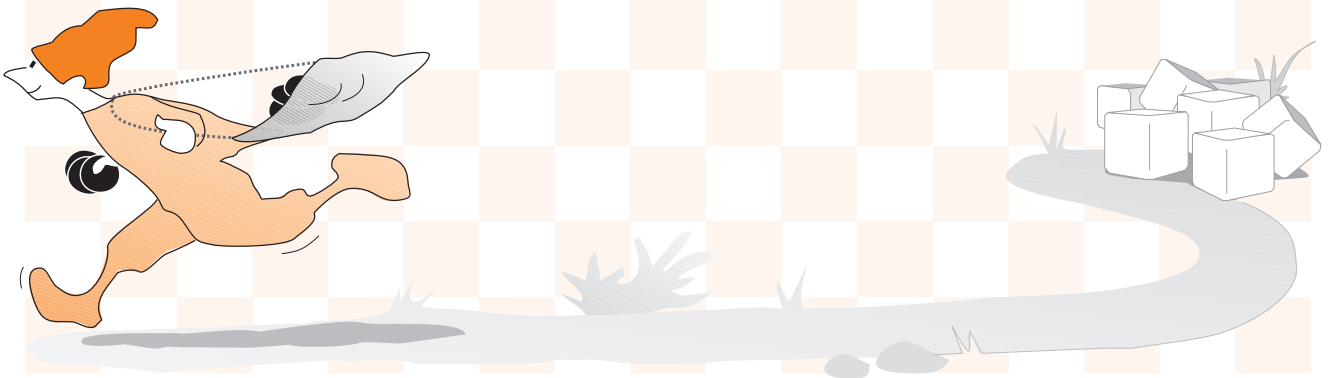
Throw a die and guess quickly what is the number on the hidden face of the die.

- 1 a. For each of the following dice, write the number that appears on the hidden face



b. What is the “magic secret?” \_\_\_\_\_

c. How did you figure out the sum? \_\_\_\_\_



## The Most Popular Sum

1 Throw two dice.

a. What is the sum of numbers showing on the two dice? \_\_\_\_\_

b. What is the greatest possible sum you can get by throwing two dice? \_\_\_\_\_

c. What is the smallest sum? \_\_\_\_\_

2 If you were to throw two dice one hundred times, what do you think will be the sum you will get for the greatest number of times? \_\_\_\_\_

Explain: \_\_\_\_\_

3 Work with a partner.

a. Let one of you throw two dice 30 times and calculate the sum of numbers showing on the two dice.

b. The other partner will tally a mark on the given on the next page for each sum.

b. Change roles and repeat the experiment. Use the tally sheet.



## The Most Popular Sum

The sum	How many times (mark tally)
2	
3	
4	
5	
6	
7	
8	
9	
10	
11	
12	

d. Answer the question below using the tally marks in the table above:













- Which sums had the most tally mark? \_\_\_\_\_
- Which sum(s) had the least tally mark? \_\_\_\_\_
- Are your answers the same as your friends' answers? \_\_\_\_\_

## The Most Popular Sum

4



For each pair of dice, add the number appearing on them and write it in the table.

$\perp$						
						
						
						
						
						
						

5

Look at the filled table. What did you notice while filling in the table?

What other things do you notice about the grouping of the numbers in the table?

Briefly explain: \_\_\_\_\_

\_\_\_\_\_

\_\_\_\_\_